



GET READY FOR

Sandesh Kadur: Wild Cats Revealed

National Geographic Live Student Presentation Study Guide



ACP SIGNATURE SERIES
PRESENTING SPONSOR




About Sandesh Kadur

Sandesh Kadur is an Indian wildlife field producer and conservation photographer known for his contributions to BBC Planet Earth II. Sandesh's films have been shown on various television networks including National Geographic Channel, BBC, Discovery Channel and Animal Planet.


More about Sandesh Kadur and his work

 sandeshkadur.com


 [Sandesh V. Kadur \(nationalgeographic.org\)](https://nationalgeographic.org)

 [National Geographic Inspires - Sandesh Kadur \(Youtube video\)](#)

 [Sandesh Kadur Showreel - 2018 \(Youtube video\)](#)

 [Explorer Classroom | Documenting Wildlife with Sandesh Kadur \(Youtube video\)](#)

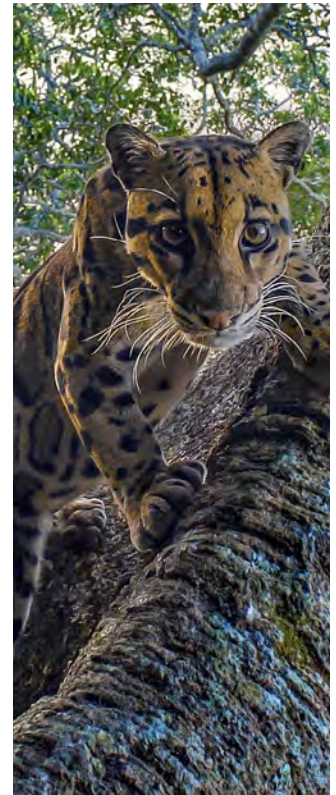
 [Nation Geographic Education: Cat Diversity](#)

 [Sandesh Kadur: The Art of Conservation | Nat Geo Live \(YouTube video\)](#)

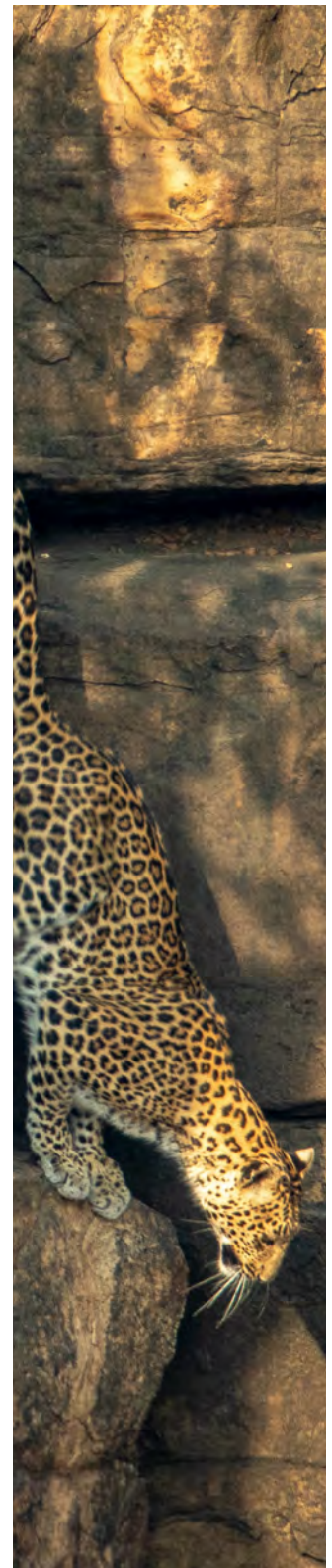


ROARING Wild Cat Terminology

Word	Definition
Canine teeth	Sometimes called fangs, they are teeth used as weapons and to grasp and hold prey.
Captivity	When animals are kept by humans.
Carnivore	An animal that eats meat.
Classification	The way scientists give animals names that everyone around the world will understand, in a way that reflects our scientific understanding of how closely different animals are related to one another.
Conservation	Ways of reducing the amount of natural resources used, including reusing and recycling.
Diurnal	Active during the day and asleep at night.
Domestication	Taking animals from their natural habitat into the human habitat, then changing them in ways that make them more suitable to living with humans.
Endangered	Animals that are in danger of becoming extinct.
Extinction	When all animals of a kind are gone, that kind of animal is extinct. They can never come back.
Family	A medium sized group used in classification, it is made up of very closely related animals.
Flank	The side part of an animal's body.
Habitat	An area able to support a type of animal.
Herbivore	An animal that eats plants such as leaves and berries.
Hybrid	The offspring of two animals of different but similar kinds, such as a lion and a tiger.
Hybridization	When two animals of different kinds have offspring together.
Instinct	An animal's inherited knowledge; knowledge that did not have to be learned.
Jungle	A large forest in warm countries with many different kinds of animals and plants. Also called a rainforest.
Mammal	A warm-blooded animal that has hair on its skin and gives its young milk to drink.
Mane	The furry crown around a male Lion's head.
Muzzle	The part of an animal's face that includes the nose and jaws.



Word	Definition
National Park	Land that is kept in a natural state for a variety of reasons, all of them important.
Nature preserve	Land that is kept in a natural state for conservation reasons where the welfare of plants and animals is more important than any other uses.
Nocturnal	Active at night and asleep during the day.
Offspring	The children of an animal.
Order	A very large group used in classification, it contains a number of closely related families.
Poaching	Illegally killing an animal.
Prairie	A large, flat plain with a lot of grass and almost no trees, such as the Great Plains of North America.
Predator	An animal that hunts other animals and eats them.
Prey	An animal hunted by another animal for food.
Rosette	A mark in an animal's fur where a number of closely placed spots form an unbroken circle.
Retract (claw)	The hiding of claws inside a paw.
Savannah	A large, flat plain with a lot of grass and scattered groups of trees, such as in East Central Africa.
Scavenge	To look for meat for food that was killed by a different animal.
Scientific name	The name given to a species by scientists when they classify it.
Siblings	All the offspring from one litter, or sometimes offspring with the same parents from two different litters.
Species	A group of animals that under normal conditions can have offspring together.
Steppes	A large, flat plain with a lot of grass and almost no trees.
Wildlife refuge	Land that is used to protect of wild animals. Sometimes parts of a wildlife refuge are not kept in a natural state to give certain species of animals a little extra help. Planting rice in a water bird area is one example.
Zoo	A type of living museum where animals are kept for people to learn about them and have fun.



Source: https://en.wikibooks.org/wiki/Wikijunior:Big_Cats/Glossary

SELF-GUIDED INQUIRY ON WILD CATS



1. Have your students select one of the following terms / lenses
 - Conservation
 - Instinct
 - Family
 - Jungle
 - Retract
 - Wildlife Refuge
2. Have students define the term / lens they selected (their own understanding of it)
3. What related concepts/ideas do you associate with your term / lens?
4. Now, research your term. How is it defined? Are there different definitions for it?
5. Take a walk around your school. What visible and observable examples of your term / lens can you identify in the immediate world around you?
6. Sketch on examples
7. Is your lens a visual metaphor for something – what might that be?

