

**House Patch****Engineered Air Theatre****Onstage Fixtures**

Channel	Circuit	Instrument		Purpose	Colour
		Type	Location		
1	25	2 @ SL 26 degrees	L5 & Q5	Acting Area - DSR Front	o/w
2	26	2 @ SL 26 degrees	M5 & S5	Acting Area - DSC Front	o/w
3	27	2 @ SL 26 degrees	O5 & T5	Acting Area - DSL Front	o/w
4	21	2 @ SL 36 degrees	L7 & Q7	Acting Area - 4' Ext. SR Front	o/w
5	22	2 @ SL 36 degrees	M7 & S7	Acting Area - 4' Ext. Centre Front	o/w
6	23	2 @ SL 36 degrees	O7 & T7	Acting Area - 4' Ext. SL Front	o/w
7	33	6" Fres	D 2	Top - Warm SR	17
8	68	6" Fres	F 2	Top - Warm CS	17
9	63	6" Fres	H 2	Top - Warm SL	17
10	11	6" Fres	N 1	Top - Warm 4' Ext. SR	17
11	13	6" Fres	Q 1	Top - Warm 4' Ext. CS	17
12	15	6" Fres	R 1	Top - Warm 4' Ext. SL	17
13	57	6" Fres	D 2	Top - Cool SR	68
14	61	6" Fres	F 2	Top - Cool CS	68
15	64	6" Fres	H 2	Top - Cool SL	68
16	10	6" Fres	N 1	Top - Cool 4' Ext. SR	68
17	12	6" Fres	O 1	Top - Cool 4' Ext. CS	68
18	14	6" Fres	R 1	Top - Cool 4' Ext. SL	68
19	70	Coda 3 Cyc		Cyc - Red	125.
20	71	Coda 3 Cyc		Cyc - Amber	127
21	66	Coda 3 Cyc		Cyc - Blue	124
22	74	SL 25-50 zooms	A 2	Side SL -Up Stage- Scrollers	various
23	76	SL 25-50 zooms	K 2	Side SR -Up Stage- Scrollers	various
24	73	SL 25-50 zooms	A 2	Side SL -Down Stage- Scrollers	various
25	75	SL 25-50 zooms	K 2	Side SR -Down Stage- Scrollers	various
26	49	6" Fres	L 2	Side SL -4' Ext.- Scrollers	various
27	53	6" Fres	T 2	Side SR -4' Ext.- Scrollers	various
28	65, 72	2 @ SL 36 degrees	C3 & I 3	Break up	71
29	60	SL 26 degree	F 1	I-Cue Top Special	60
30	62	SL 26 degree	F 1	I-Cue Top Special	60

**Pipe #4 - Front/Top Specials**

Channel	Circuit	Instrument		Purpose	Colour
		Type	Location		
31	29	SL 15-32 degree zooms	N-O 4	Special	various
32	28	SL 15-32 degree zooms	N-O 4	Special	various
33	46	SL 15-32 degree zooms	O-P 4	Special	various
34	45	SL 15-32 degree zooms	P-Q 4	Special	various
35	31	SL 15-32 degree zooms	Q-R 4	Special	various
36	32	SL 15-32 degree zooms	Q-R 4	Special	various

**Pipe #9 - Front Specials**

Channel	Circuit	Instrument		Purpose	Colour
		Type	Location		
37	51	SL 26 degrees	L 9	Special	n/a
38	3	SL 26 degrees	N-O 9	Special	n/a
39	4	SL 26 degrees	N-O 9	Special	n/a
40	5	SL 26 degrees	Q-R 9	Special	n/a
41	6	SL 26 degrees	Q-R 9	Special	n/a
42	55	SL 26 degrees	T 9	Special	n/a
43	1	SL 15-32 degree zooms	M-N 9	Special	n/a
44	2	SL 15-32 degree zooms	M-N 9	Special	n/a
45	42	SL 15-32 degree zooms	O-P 9	Special	n/a
46	44	SL 15-32 degree zooms	P-Q 9	Special	n/a
47	7	SL 15-32 degree zooms	R-S 9	Special	n/a
48	8	SL 15-32 degree zooms	R-S 9	Special	n/a

**Backs and Booms**

Channel	Circuit	Instrument		Purpose	Colour
		Type	Location		
49	59	Par	D-E 3	SR Back	02
50	69	Par	G-H 3	SL Back	02
51	87	SL 25-50 zooms	AA 1	SR Tip Cool	359
52	88	SL 25-50 zooms	AA 1	SR Tip Warm	27
53	81	SL 25-50 zooms	BB 1	SL Tip Cool	359
54	82	SL 25-50 zooms	BB 1	SL Tip Warm	27

**DMX Devices**

71-74	331-334	CSR I-Cue Mirror		Instrument Ch # 29	60
75-78	335-338	CSL I-Cue Mirror		Instrument Ch # 30	60
101	301	SR Top Scroller DMX		Instrument Ch # 7	various
102	302	C Top Scroller DMX		Instrument Ch # 8	various
103	303	SL Top Scroller DMX		Instrument Ch # 9	
104	304	Ext.SR Top Scroller DMX		Instrument Ch # 10	
105	305	Ext. C Top Scroller DMX		Instrument Ch # 11	
106	306	Ext. SL Top Scroller DMX		Instrument Ch # 12	
111	311	USR Scroller DMX		Instrument Ch # 22	
112	312	USL Scroller DMX		Instrument Ch # 23	various
113	313	DSR Scroller DMX		Instrument Ch # 24	
114	314	DSL Scroller DMX		Instrument Ch # 25	
115	315	Ext. SR Scroller DMX		Instrument Ch # 26	
116	316	Ext. SL Scroller DMX		Instrument Ch # 27	various

**House and Work Fixtures**

Channel	Circuit	Instrument		Purpose	Colour
		Type	Location		
91	67	Minuet Floods	D-E 3 & G-H3	Stage Work Lx	n/c
92	40	Minuet Floods	O-P 3 & P-Q 3	Work LX	n/c
93	107	architectural		Houselights - Aisle lighting	n/c
94	104	architectural		Houselights - Underneath balcony	n/c
95	101	architectural		Houselights - Stairs to balcony	n/c
	103	architectural		Houselights - Balcony	n/c
96	102	architectural		Houselights - Wall Sconces	n/c
	97	architectural		Houselights - Audience left	n/c
	98	architectural		Houselights - Audience left wall	n/c
	99	architectural		Houselights - Audience right	n/c
	100	architectural		Houselights - Audience right wall	n/c
	105	architectural		Houselights - Rope light / Doors	n/c

**Scroller Control Tips**

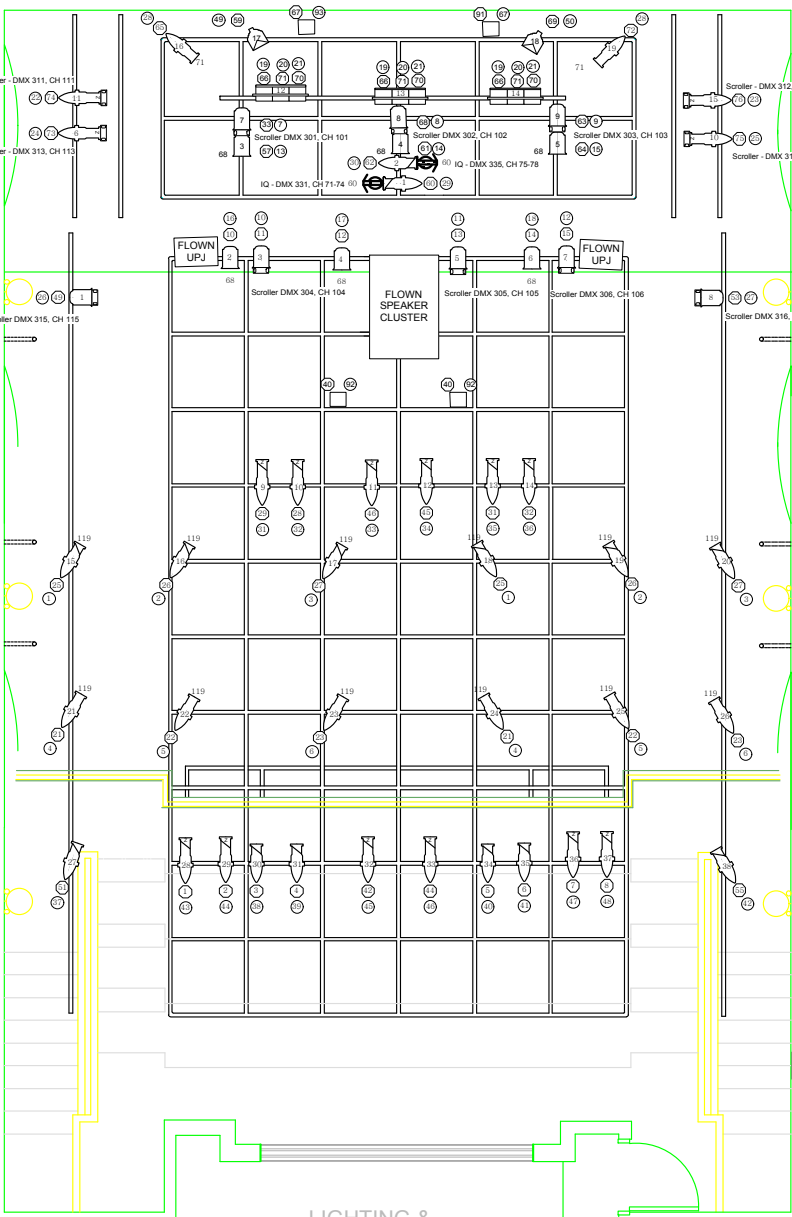
Group #	Colour	Name	Intensity
1	n/c		01
2	4	Medium Bastard Amber	07
3	317	Apricot	13
4	23	Orange	18
5	36	Medium Pink	25
6	332	Cherry Rose	32
7	26	L. Red	38
8	342	Rose Pink	44
9	48	Rose Purple	52
10	356	Middle Lavender	59
11	58	Deep Lavender	65
12	64	Steel Light Blue	72
13	68	Sky Blue	79
14	77	Green Blue	85
15	79	Bright Blue	92
16	90	Dark Yellow Green	Full

**Scroller Control Tops**

Group #	Colour	Name	Intensity
1	4	Medium Bastard Amber	01
2	364	Blue Bell	07
3	318	Mayan Sun	13
4	95	Medium Green	18
5	349	Fishcer Fuchsia	25
6	377	Iris Purple	32
7	23	Orange	38
8	375	Cerulean Blue	44
9	339	Broadway Pink	52
10	80	Primary Blue	59
11	58	Deep Lavender	65
12	25	Orange Red	72
13	75	Twilight Blue	79
14	94	Kelly Green	85
15	332	Cherry Rose	92
16	15	Deep Straw	Full

**Available Circuits (Not used in House Hang)**

9	54
16	56
17	58
18	77
19	78
20	79
24	80
30	83
34	84
35	85
36	86
37	89
38	90
39	91
41	92
43	93
47	94
48	106 (1.2K in Lobby Rack)
50	108 (1.2K in Lobby Rack)
52	



**KEY**

- 65 Colour
- Instrument Number
- Dimmer
- Channel

**Engined Air Theatre**  
 Balcony Level / House Lighting Plot  
 August 13, 2012  
 Scale: 1/4" = 10"

**LEGEND**

- 36 degree SL
- 26 degree SL
- 15-32 degree SL Zoom
- 25-50 degree SL Zoom
- 6" Fresnelite
- Source 4 Par (Wide)
- Coda Cyc Cel Unit
- Minuette (Worx)
- Rosco I-Cue Mirror
- Chroma Q Scroller